

# Hendrickson Intraax Bushing Adapter

15040

**TIGER  
TOOL**

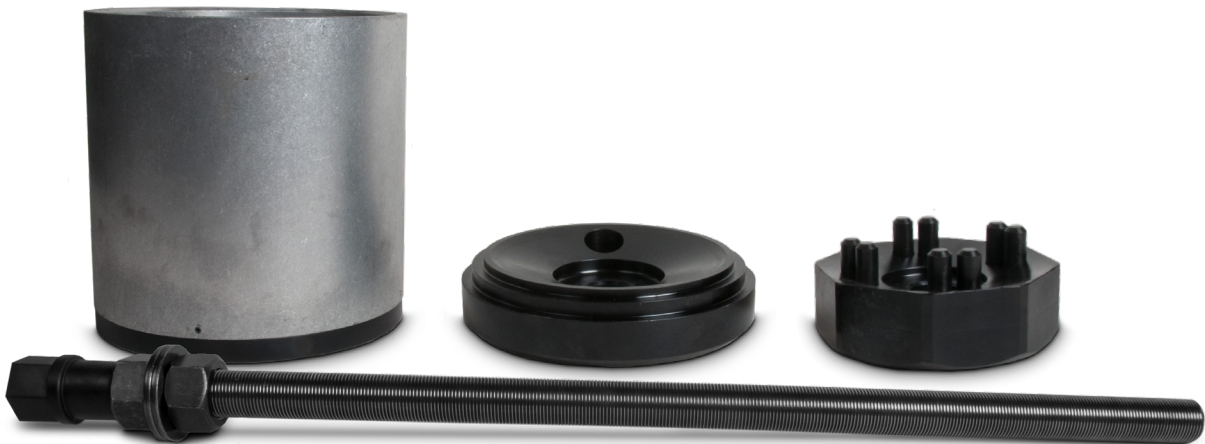
Have What It Takes

## Safety Warning

**Read all instructions and safety warnings prior to operation. Failure to do so could result in equipment damage, personal injury, or even death.**

**CAUTION:** USE REPLACEMENT PARTS AND ACCESSORIES PROVIDED BY TIGER TOOL ONLY. ALL REPLACEMENT PARTS AND ACCESSORIES ARE AVAILABLE. KEEP HYDRAULIC COUPLER PROTECTED WHEN NOT IN USE. DUST CAPS SHOULD BE USED ON COUPLERS WHEN NOT IN USE TO AVOID CONTAMINANTS FROM ENTERING THE HYDRAULIC CYLINDER AND POWER SOURCE. THIS PRACTICE WILL HELP TO EXTEND THE LIFE OF THIS PRODUCT AND ENSURE CONTINUED CONSISTENT OPERATION.

- **Stay Alert!** Watch what you are doing and use common sense when operating this tool.
- Inspect product for damage prior to using; do not use if product is in unsafe condition.
- Do not operate tool while under the influence of drugs, alcohol, or medication.
- Always use safety equipment to prevent injuries. Approved face and eye protection must always be worn by the operator, as well as others in the work area.
- Do not overreach. Keep proper footing and balance at all times.
- Dress properly. Do not wear loose clothing or jewelry. Keep your hair, clothing and gloves away from moving parts.
- Keep hands clear of all pressurized hydraulic components.
- Always ensure hoses are free from sharp bends and kinks.
- Keep your work area clean and well lit.
- Cylinders are designed for 10,000 psi (700 bar) maximum working pressure. Do not connect to a pump with a higher rated pressure. Use a pressure gauge in the system at all times. Ensure all components in the system are rated for 10,000 psi (700 bar).



View demonstration videos and a complete product list at [tigertool.com](https://www.tigertool.com)

Technical Support  
1.800.661.4661

# Hendrickson Intraax Bushing Adapter

15040

**TIGER  
TOOL**

Have What It Takes

## Operating Instructions

### Removal of Bushing

- 1 Scribe the bushing orientation on the beam tube and spacer tube.
  - 2 Thread cylinder plate on to hydraulic cylinder and assemble tool as shown. The spring pins are not required to line up with the bushing holes during removal.
- Note: The hydraulic cylinder shown is from our 15000 Pin & Bushing Service Kit. Cylinder can be purchased separately.**
- 3 Tighten hex nuts to remove slack. Thread on hammer adapter in the event the bushing becomes seized. Hook up hydraulics and begin removal operation.
  - 4 After each 2 inch stroke, re-tighten nuts to take up slack. (Most bushing will require 3-4 adjustments)



View demonstration videos and a complete product list at [tigertool.com](http://tigertool.com)

Technical Support  
1.800.661.4661

# Hendrickson Intraax Bushing Adapter

15040

**TIGER  
TOOL**

Have What It Takes

## Operating Instructions

### Installation of Bushing

- 1 Lubricate the bushing (Use OEM recommended lube) and insert the bushing into spacer tube.
- 2 Place the plunger on top of the bushing, align the line on the bushing with the line on the plunger. The 4 corresponding pins to the bushing type you are installing should seat into the bushing.
- 3 Assemble tool as shown.
- 4 Tighten retaining nuts to remove slack. Thread on hammer adapter in the event the bushing becomes seized. Confirm the plunger is aligned with the scribed mark on the beam tube and the pins are still engaged in the bushing. Hook up hydraulics and begin installation operation. After each 2 inch stroke, retighten nuts to take up slack. (Most bushing will require 3-4 adjustments)

Here at Tiger Tool, your satisfaction is our number one priority. Should you have any questions about this or any of our products, please call us at 1.800.661.4661.



View demonstration videos and a complete product list at [tigertool.com](http://tigertool.com)

Technical Support  
1.800.661.4661

# Hendrickson Intraax Bushing Adapter

15040



Have What It Takes

## Parts Breakdown



Item No.	Part Number	Description	Qty.
1	15001-65	Intraax Plunger	1
2	15001-64	Intraax Spacer Tube	1
3	15001-66	Intraax Location Pin	8
4	15001-67	Cylinder Plate	1
5	15001-68	Intraax Wear Ring	1
6	10501-5	Spring Pin 1/8" x 1/4"	4
7	15040-1	Retainer Clip	8
8	15040-2	Intraax Spring	8
9	15001-40D	26" Threaded Rod	1
10	15001-42	1" Washer	2
11	15001-41	Hex Nut 1-14	2
12	15001-69	Hammer Adapter	1



View demonstration videos and a complete product list at [tigertool.com](http://tigertool.com)

Technical Support  
1.800.661.4661