



455 Rochester Street, Avon, NY 14414  
 Phone: 585-226-9500  
 Fax: 888-478-2797



PROUDLY MADE IN THE U.S.A.  
 An ISO 9001:2008 Certified Company



Star Headlight & Lantern Co., Inc.  
 455 Rochester Street  
 Avon, NY 14414  
 Phone: 585-226-9500  
 Fax: 888-478-2797  
 www.starheadlight.com  
 www.facebook.com/star1889



SF168 Rev - 9-1-15



STAR WARNING SYSTEMS



PROUDLY MADE IN THE U.S.A.  
 An ISO 9001:2008 Certified Company

## OPTIONAL MOUNTING BRACKETS

- **BB274-BEACONMMB** - Mirror bracket for 1" NPT pipe mount lights
- Compatible with all beacons with 1" pipe mounts (244, 256, 257, 258, etc.)
- Can also mount the 7100LED mini lightbar

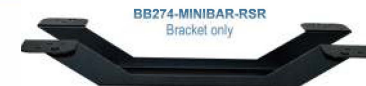


BB274-7100MMB  
Bracket only



BB274-BEACONMMB  
Bracket only

- **BB274-MINIBAR-RSR** - Raises product up approx. 3"
- Designed for use with: 9016, 9018, 9100, 9200, 9216, and 9224 series
- Two 7/16" (.4375") mounting holes spaced 6.6" apart
- Uses standard permanent mount hardware for all bars



BB274-MINIBAR-RSR  
Bracket only



- **BB274-DLXTHU-LPB** - Mounts two DLXT or two DLXTHU
- Fits on Chevy Tahoe vehicle

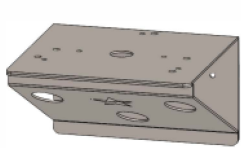


BB274-DLXTHU-LPB  
Bracket only

- **BB274-343K** - Spring loaded for quick and easy rotation (no tools)
- Adjustable to any of the four 90° positions



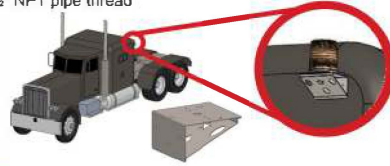
BB274-343K  
Bracket only



BB274-90  
Bracket only



- **BB274-90** - 90° bracket for DOT and other heavy duty applications
- 14GA Stainless Steel powder coated black
- Mounts 255 series, 240 series, and other lights with 1/2" NPT pipe thread



274-MMB  
Bracket only



- **274-MMB** - permits standard 1/2" pipe mounted warning lights to be mounted quick and easy to outside mirror assemblies (201Z series & 200Z series)
- **274-MMB1S** - permits standard 1" pipe mounted warning lights to be mounted quick and easy to outside mirror assemblies (255 series & 256 series)



274-MMB  
Bracket only



- **274-MMB** - permits standard 1/2" pipe mounted warning lights to be mounted quick and easy to outside mirror assemblies
- **240S** - standard high/low intensity is a standard feature on double/quad flash models
- Rugged die-cast aluminium base is protected with a powder coat finish
- **240S** - 4 1/4"H x 5 1/2"dia., 2 lbs.



274-MMB  
Bracket only



- **274-MMB** - permits standard 1/2" pipe mounted warning lights to be mounted quick and easy to outside mirror assemblies
- **200S** - most popular medium profile strobe light
- Selectable high/low intensity is a standard feature
- Modular circuit is completely encapsulated for increased shock and weather resistance
- Rugged die-cast base is fully gasketed
- **200S** - 6 1/4"H x 5 1/2"dia., 3 lbs.



274-MMB  
Bracket only



- **274-MMB** - mirror mount kit
- Permits standard 1/2" pipe mounted warning lights to be mounted quick and easy to outside mirror assemblies
- Anodized aluminium
- **274-MMB1S** - 1" mirror mount kit
- Permits standard 1" pipe mounted warning lights to be mounted quick and easy to outside mirror assemblies
- Anodized aluminium

- **Dimensions** - 2 1/4" x 2", 0.4 lbs.

- **274-RCK-\*** - Rack for mounting multiple warning lights (\* = 48"L, 52"L, 58"L)
- Permits mounting of multiple warning lights
- Standard Star bar clamps can be used for mounting to various vehicle rain gutters or door frames
- Anodized aluminium
- 13 lbs.



274-RCK-\*  
Bracket only

- **274-SL** - self levelling bracket
- Heavy metal u-bar mounts on vehicle with two screws on 6 1/4" centers
- Metal plate swings free for levelling action in any vehicle position
- Heavy gauge steel
- 11"H x 4 1/4"D, 9 lbs.

274-SL  
Bracket only



- **274-SL1** - self levelling bracket for Star Mini-Bars®
- Mounts on vehicle with three screws on 5 3/4" centers
- Metal plate swings free for levelling action in any vehicle position
- Anodized aluminium
- 11"H x 4 1/4"D, 5 lbs.

274-SL1  
Bracket only



- **274-LMB** - L-bracket
- Permits mounting from sides, back, or front of vehicles where top mounted light would cause clearance problems
- Also shields operators eyes for cage mount applications on lift trucks and construction machinery
- Powder coated aluminium
- 8"H x 8"W x 8"D, 2 lbs.

274-LMB  
Bracket only



- **274-40C/274-40S** - mirror mount kit
- Heavy duty stainless steel construction
- **240C** - tall lens series applications
- **240S** - short lens applications



274-40S  
Bracket only



274-40C  
Bracket only