



## PRODUCT DATA SHEET

# P/N: 1033 CUP MOUNT



**PAC Cup Mount** is a protective base which also provides positioning and locating under many different types of equipment including SCBA cylinders, Rams, Jacks, Saws and Hydraulic Pumps. Cup Mounts are a logical companion to Fastlok Adjustamount, Jumbo Lok and other PAC brackets.

### TYPICAL SPECIFICATION

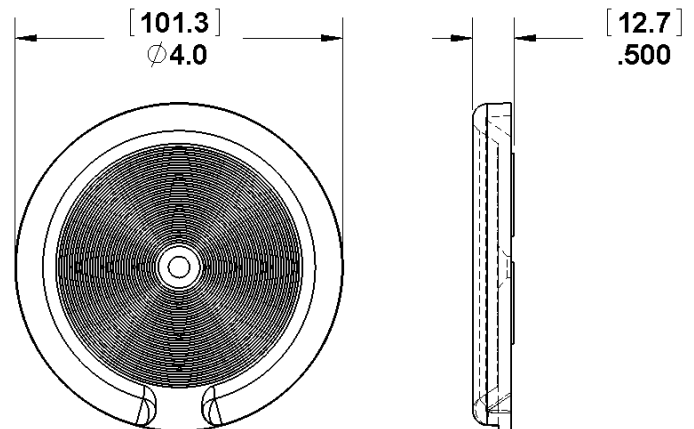
Mounting Bracket shall be PAC PN 1033.

Bracket shall be single piece construction; made from tough, corrosion free material. Attachment to be with high strength double sided tape.

Firefighters shall be protected from conductivity.

### FEATURES

- Components molded from high quality materials
- Non-metallic. Wont rust or corrode.
- Attaches with double sided VHB tape.
- Use as a base to protect standing equipment.
- Use as a locator guide under equipment feet.
- Use a support under heavy loads.
- Sold Individually
- Stainless Steel Fasteners provided
- Mounts to PAC tool boards flat surfaces
- Installs easily without tools



### SPECIFICATIONS

P/N	WT.	MAX LOAD	LOCATING RANGE	HANGER RANGE	FLAME TOXICITY CHEMICAL
1033	.05lbs	N/A	2-7/8" DIA.	N/A	N/A

Performance Advantage Company

Lancaster, New York

[www.pactoolmounts.com](http://www.pactoolmounts.com)

888-514-0083

REFERENCE	QTY	REMARKS	PROJECT
			LOCATION
			BUYER
			DEALER
			BUILDER
			SUBMITTED BY:
			DATE:



**PAC Cup Mount is a protective base which also provides positioning and locating under many different types of equipment including SCBA cylinders, Rams, Jacks, Saws and Hydraulic Pumps. Cup Mounts are a logical companion to Fastlok Adjustamount, Jumbo Lok and other PAC brackets.**

- Non-metallic. Wont rust or corrode.
- Attaches with double sided VHB tape.
- Use as a base to protect standing equipment.
- Use as a locator guide under equipment feet.
- Use a support under heavy loads.
- Sold Individually
- Mounts to PAC tool boards flat surfaces
- Installs easily without tools