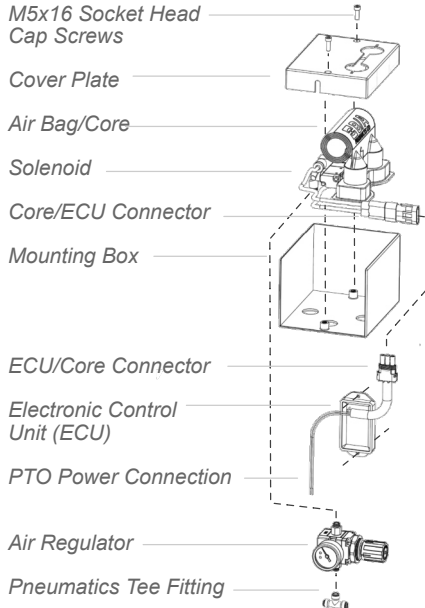


B/A Products - AirBar Installation Instructions

This manual is an integral part of the AirBar system and describes the proper installation, safe operation and maintenance procedures to ensure the safety device works as intended and the life of the unit is extended.

Check all of the included parts according to the parts list and read the entire instructions including any disclaimers and safety guidelines before installing or operating the AirBar unit. Not doing so or improper installation will void any warranty of the product. If you have any questions or issues during installation, maintenance or use of this product please contact the authorized B/A Products dealer the AirBar was purchased from.

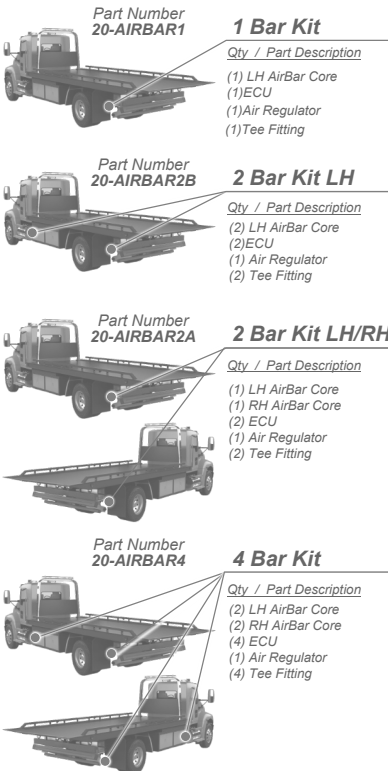
Specifications



Nominal Input Voltage	12V
Operational Pressure	13 -18 psi
Extended Sock Length (From Front of Box)	25.25"
Mounting Box Dims	5.375" x 6.375" x 4.25"
AirBar Core IP Rating	IP-65
ECU/Connection IP Rating	IP-68

Configurations & Parts List

AirBars are currently available in four standard configurations show below.

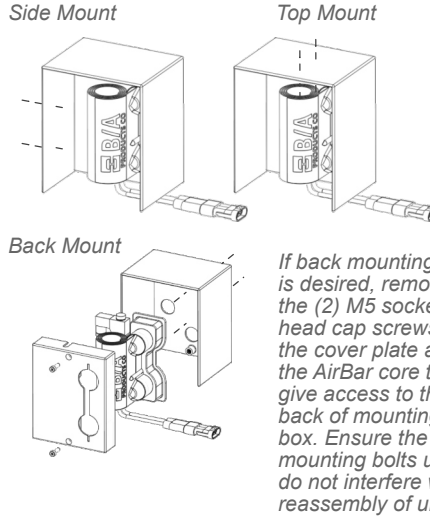


(Figure 1-1)

Getting Started

Step 1 Mounting The AirBar

Secure the AirBar by selecting a location for mounting based on the selected configuration (see diagram 1-1). Pre-drill a minimum of two holes in the mounting box for fasteners (not included) that will be used to mount the AirBar to a sturdy part of the truck such as frame rails or other metal plates.

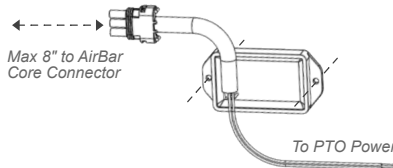


⚠ Important

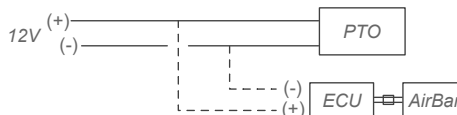
Ensure the location and profile of the bolts used for mounting do not protrude into the path of the air bag and allow for a minimum of 4" of clearance below the mounting box to avoid obstructions blocking the rolling/unrolling action of the AirBar. Care should be taken to avoid cutting or damaging the air bag during installation.

Step 2 Mounting ECU & Power Connection

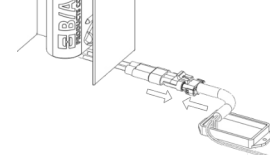
Each AirBar requires an electronic control unit (ECU). The ECU should be mounted using the mounting holes in the body of the ECU and should be within 8 inches of the AirBar it is controlling to insure the connector cable can reach the main AirBar.



Splice the positive and negative wires from the ECU into the corresponding wires from the PTO (12V) using the supplied wire connectors. This allows the AirBar to be deployed automatically when the PTO is engaged.



Once the power is connected from the PTO to the ECU, plug the connector from the ECU into the AirBar unit.



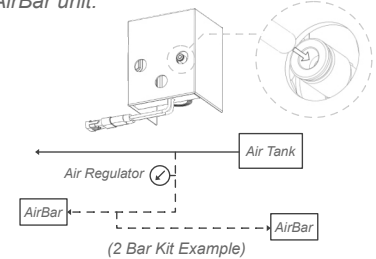
If you are installing multiple AirBars, repeat Step 1 & Step 2 until you have all the AirBars mounted with their corresponding ECU's hooked up to the PTO 12V power before continuing.

Step 3 Connecting Pneumatics

Locate an existing on-board air supply, ensuring the line is a protected auxiliary feed and splice the supplied tee fitting into the 1/4" output line from the tanks. Seek Manufacturer's guidance.



Run a 1/4" air supply line from the tee fitting to the push connect air fitting on the supplied air regulator with gauge. Run a 1/4" air supply line from the air regulator to the push connect air port on the solenoid located on the back of the AirBar unit.



**Only a single air regulator is required even with multiple AirBars. The supply line going to the AirBar would have the supplied tee fitting installed and 1/4" air supply line run to the next AirBar unit. Repeat this until all AirBars are supplied with air.

⚠ Warning

Do not exceed 18 PSI or permanent damage may occur and will void the warranty

Operating The AirBar

Simply turn on the PTO and the AirBar will automatically deploy with flashing LED's. Operators can easily walk through the AirBar when extended to keep a safe working area. When power to the PTO is turned off, the AirBar automatically retracts and LED's are turned off.

Maintenance

To maintain the AirBar system, keep the mounting box free from dirt, debris, snow or ice. Periodically check the electrical connections to insure they are tight and free from moisture or dirt. Avoid using high-pressure water to clean the AirBar as it may damage the electrical components.

Warranty

The AirBar System is backed by a 1 Year Warranty from B/A Products against manufacturer's defects.