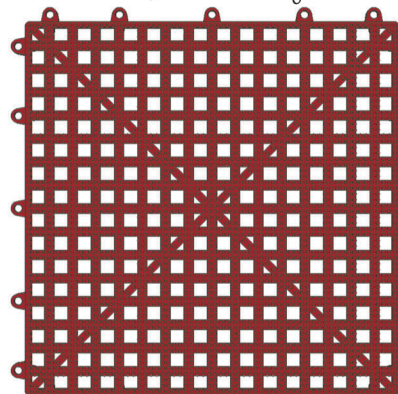
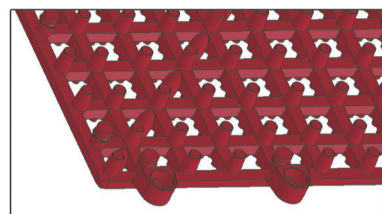


Dri-Dek[®] Specifications

1' x 1' x 9/16" Interlocking Tile



2" x 12" Beveled Edge[™]



Dri-Dek's bottom surface triple ventilation design with 284 flexible legs dries equipment rapidly.

Dri-Dek also available in 3' x 4' Sheets and 3' x 12' Rolls comprised of permanently bonded 1' x 1' Tiles. (Sheets and Rolls not shown)

Spec Dri-Dek

Material: Flexible Oxy-B1[™] Vinyl
Additives: Oxy-B1[™], Ultraviolet Stabilizers, Impact Modifiers.
Tensile Strength: 2750 PSI (ASTM D 412)
Elongation: 348%
Weather Resistance: 96% retention of Elongation
107% retention of 100% Modulus
98% retention of Tensile Strength
99% retention of Color (Weatherometer @ 720 hours)
Temperature Range: Designed for continuous environments from -30° F and not exceeding 167° F (ASTM D 746)
Chemical Resistance: Resistant at ambient temperature to inorganic acids, oils, grease, detergents, brine and organic solvents except Methyl Ethyl Ketone (MEK), Tetra Hydro Furan (THF), Demethyl Formamide (DMF), Methyl Iso Butyl Ketone (MIBK) and Phosphate Ester. Dri-Dek will withstand < 50% Nitric Acid concentration.
Dielectric Strength: 500volts/Mil (ASTM D 149) (non-conductive)
Insulation Resistance: 1000 Megaohms/1000ft. (UL 82-106)
Volume Resistivity: 1 x 10¹⁰ ohm-cm (ASTM 257057T)
Flammability: Flame resistant. Passed Vertical Flame Test UL 94V-O
Description: Dri-Dek is a 12"x12"x9/16" interlocking square made from virgin Oxy-B1[™] polyvinyl chloride that is flame and chemical resistant. Each square has a knobby, perforated surface with the registered brand name Dri-Dek in two corners.
Dri-Dek Standard Colors: Red, Black, Gray, White, Yellow, Green, Almond, Blue, Hunter Green and Burgundy.
Made in USA

KENDALL PPRODUCTS POB 8656 Naples, FL 34101
Email: info@dri-dek.com Tel: 800-348-2398

Dri-Dek[®] Compartment Liner



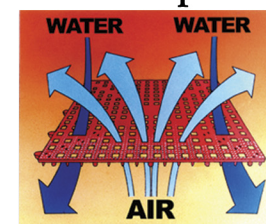
Dri-Dek is available from finer truck body makers, upfitters and truck equipment dealers all across America.

Think Inside the Box.

Dri-Dek®

The Self-Draining Compartment Liner

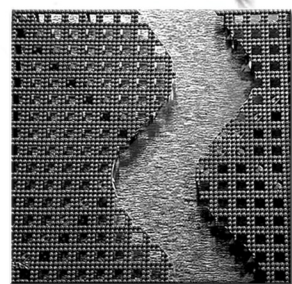
Dri-Dek takes care of the gear that takes care of you. With Dri-Dek in your compartments and on your cargo bed, tools and equipment stay high, dry and cushioned from impact. Loads stay put. Your truck body lasts longer. How? It's the flexible legs, 284 of them under every 1'x1' tile elevate and ventilate the textured surface. Fresh air, no rust. The sooner Dri-Dek goes in the truck, the sooner it goes to work for you. Doing the job all day, every day. Just like you. Made in the USA.



*Tools and Equipment Rides
High, Dry and ...Quiet.*



The 1'x1' tiles just snap together securely.



Trims to fit perfectly for a quick and easy solution.



A breeze to clean, just roll away and hose.



Keep tools and valuable gear dry, protected and secure in tool boxes.

